

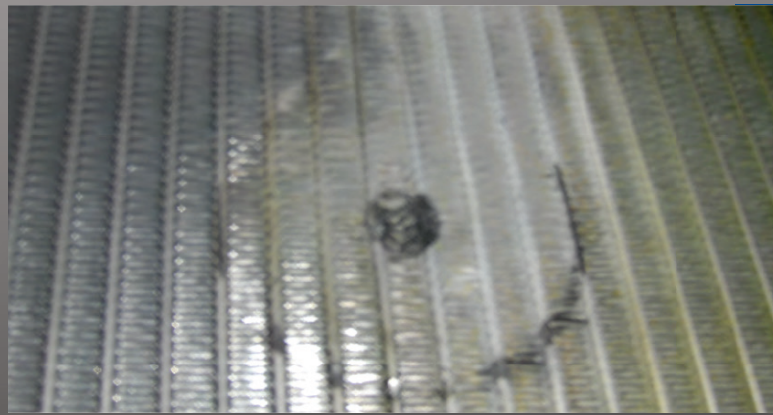
RETURNS NOT COVERED UNDER WARRANTY

RADIATORS



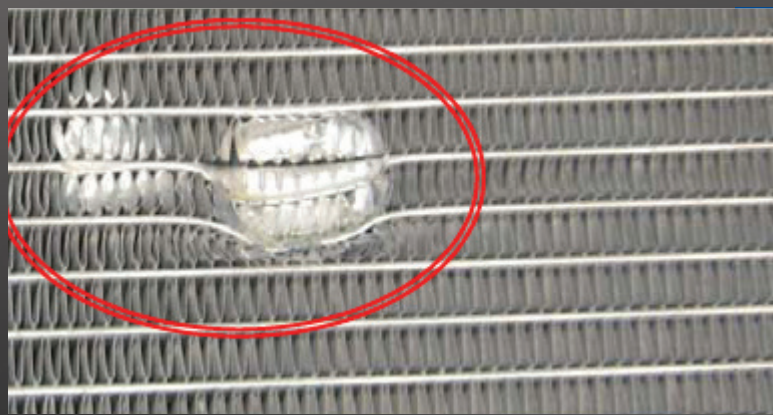
OEM RADIATOR

Original Equipment part being returned for warranty credit.



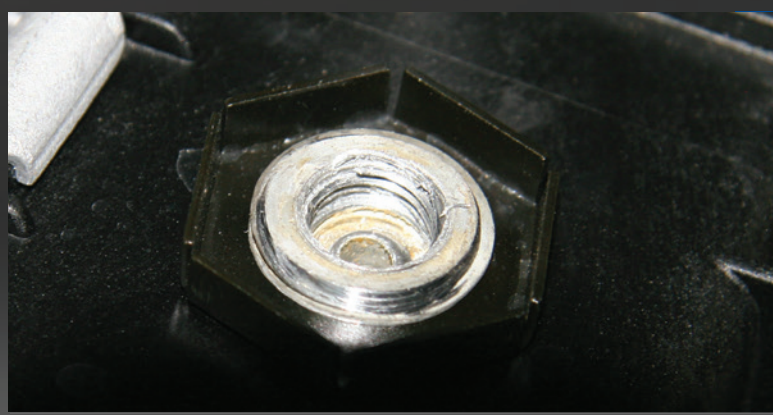
COLLISION / FAN DAMAGE

Physical damage as a result of collision or radiator fan damage.



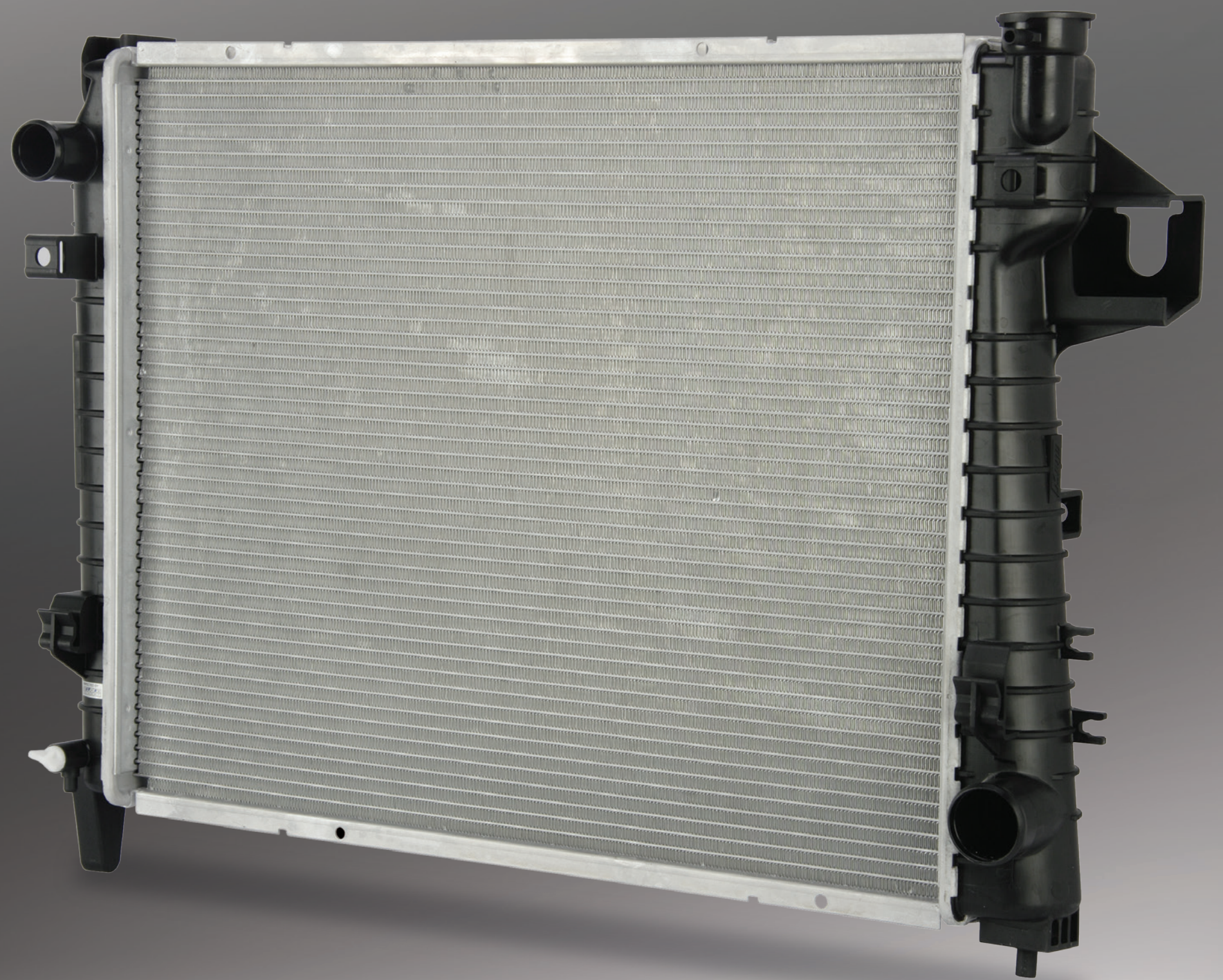
PRODUCT DAMAGE

New product that has been damaged during the course of attempted installation.



OIL COOLER THREADS

Inconsistent thread patterns will be noticeable as a result of improper installation.



SPECTRA
PREMIUM™

TRUST PARTS
developed and engineered here